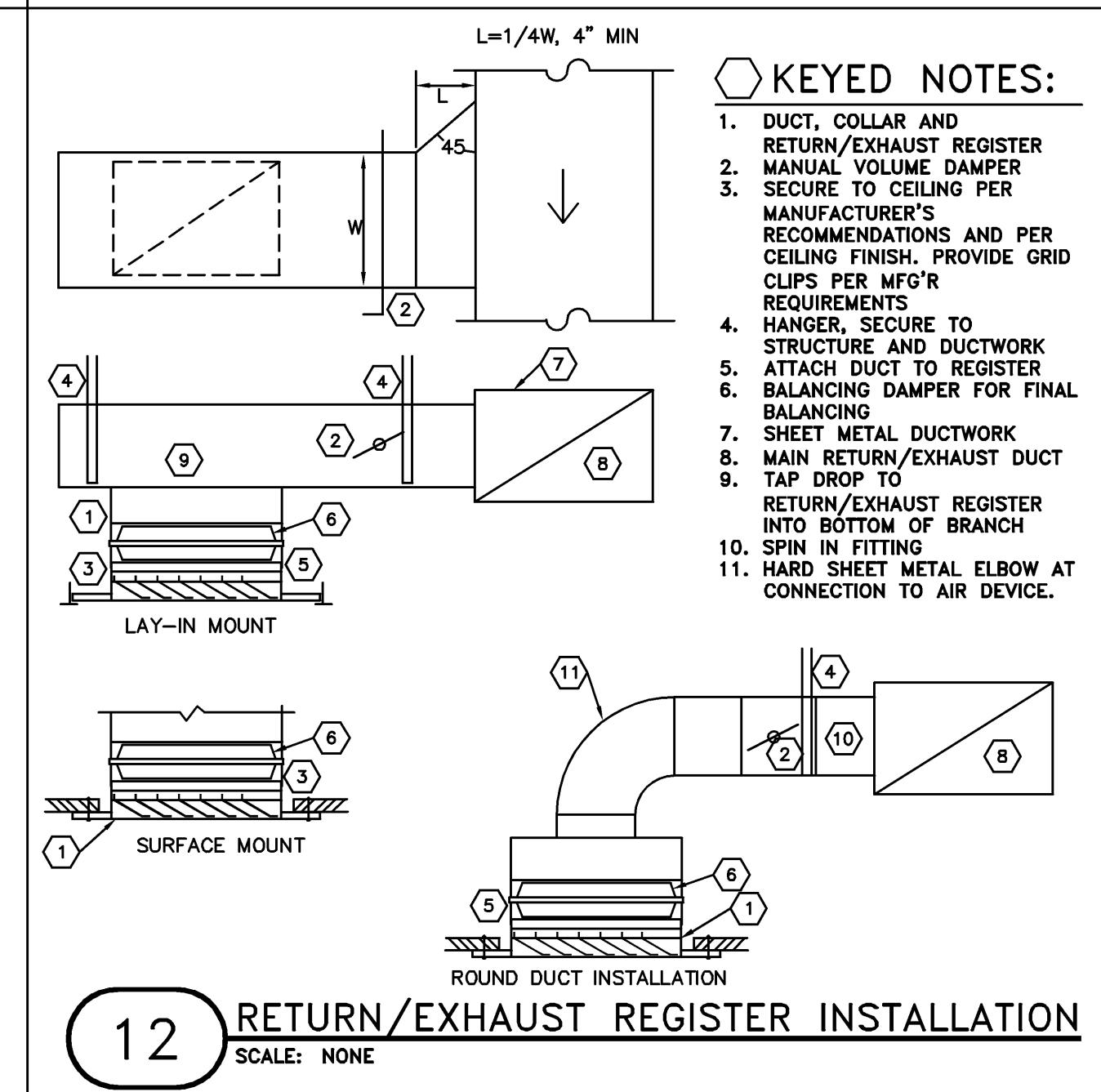
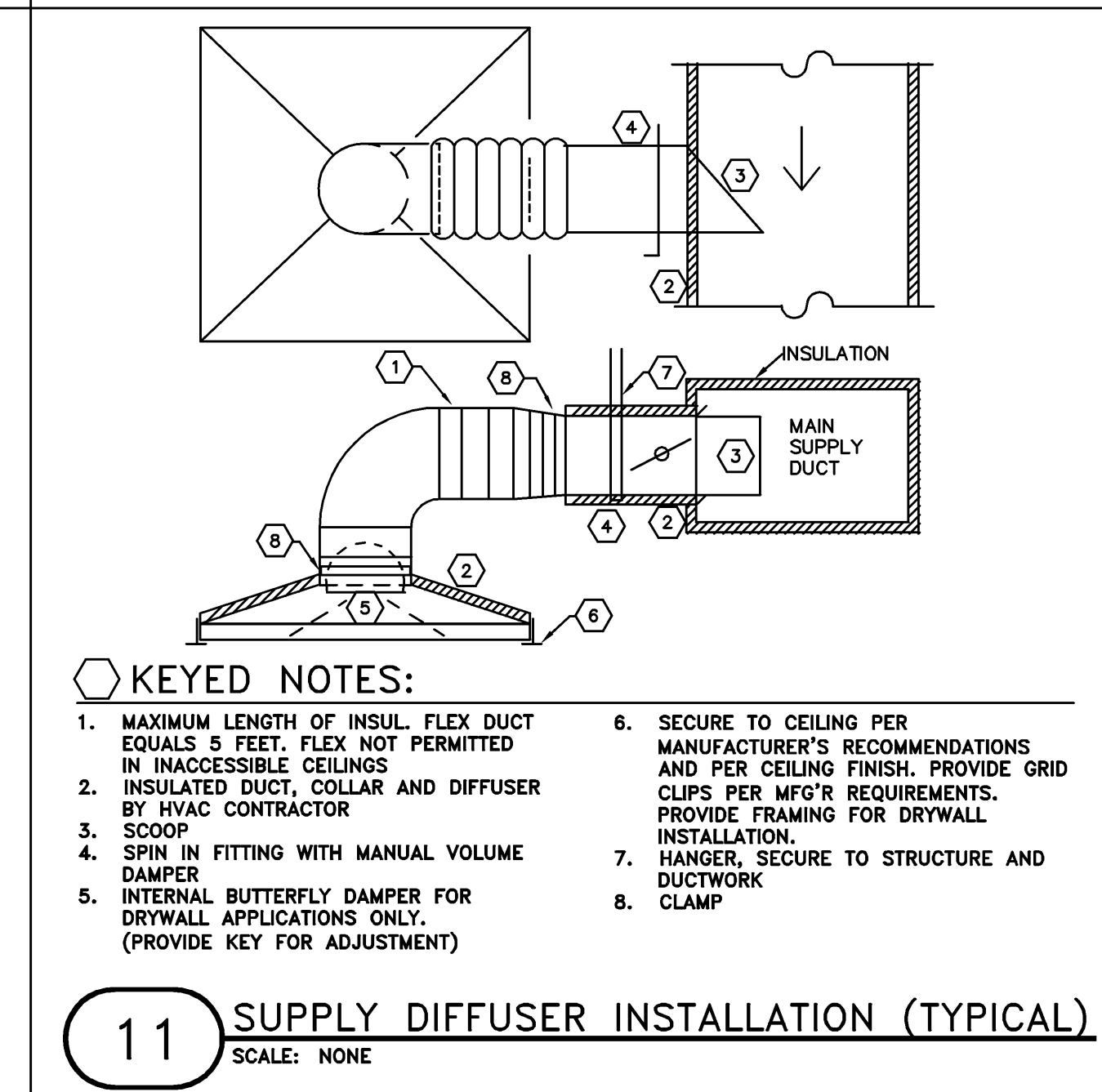
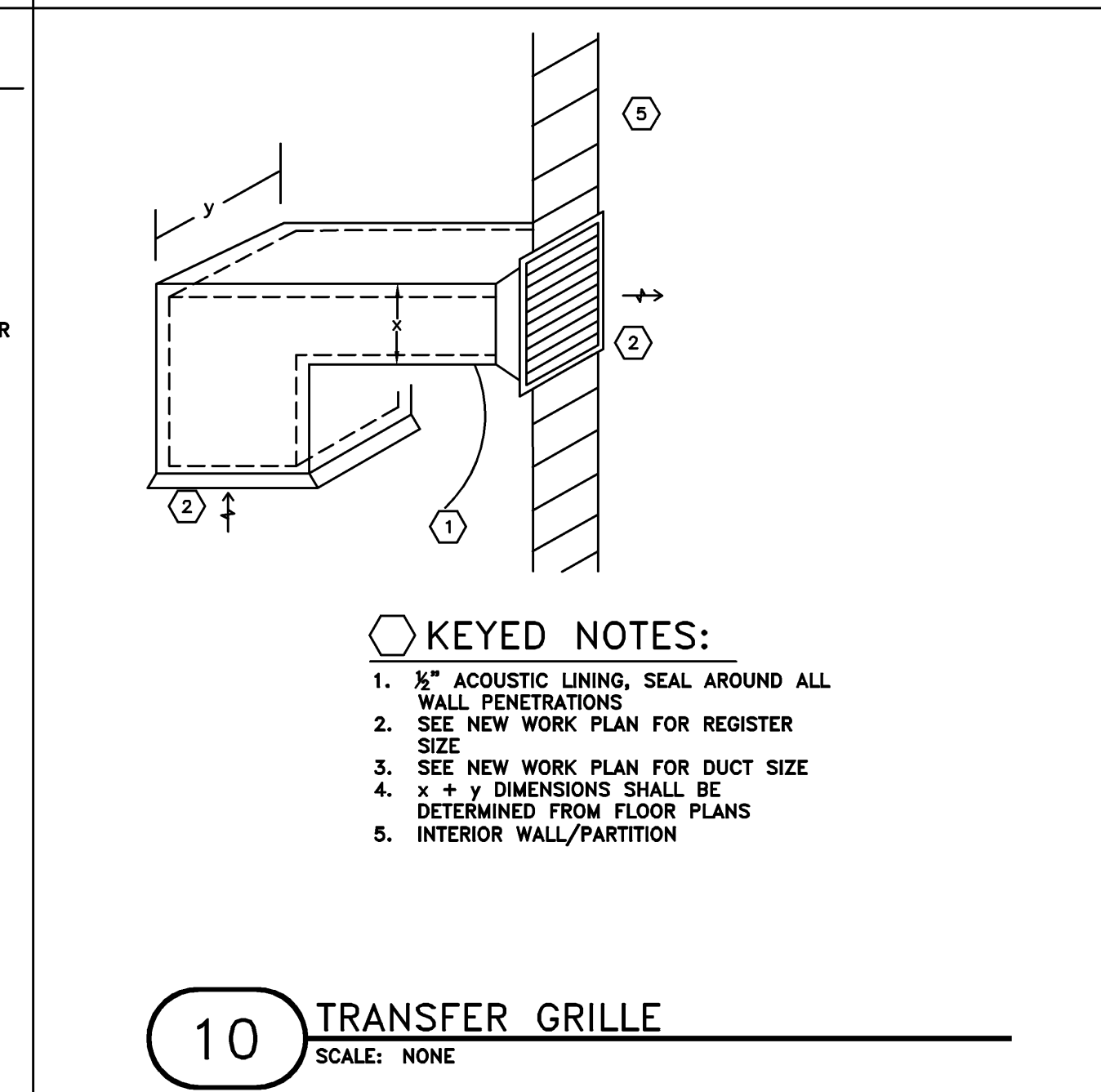
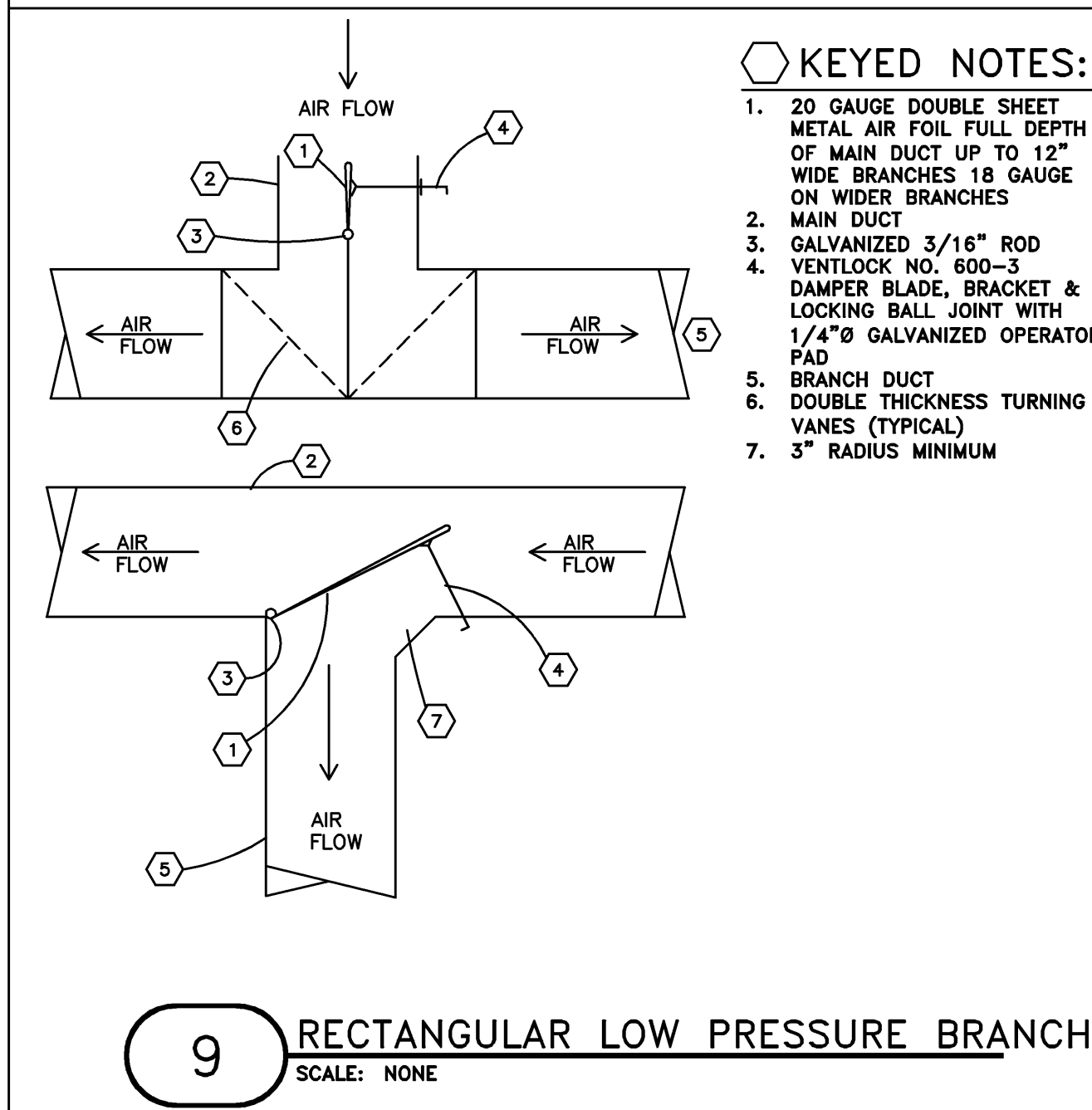
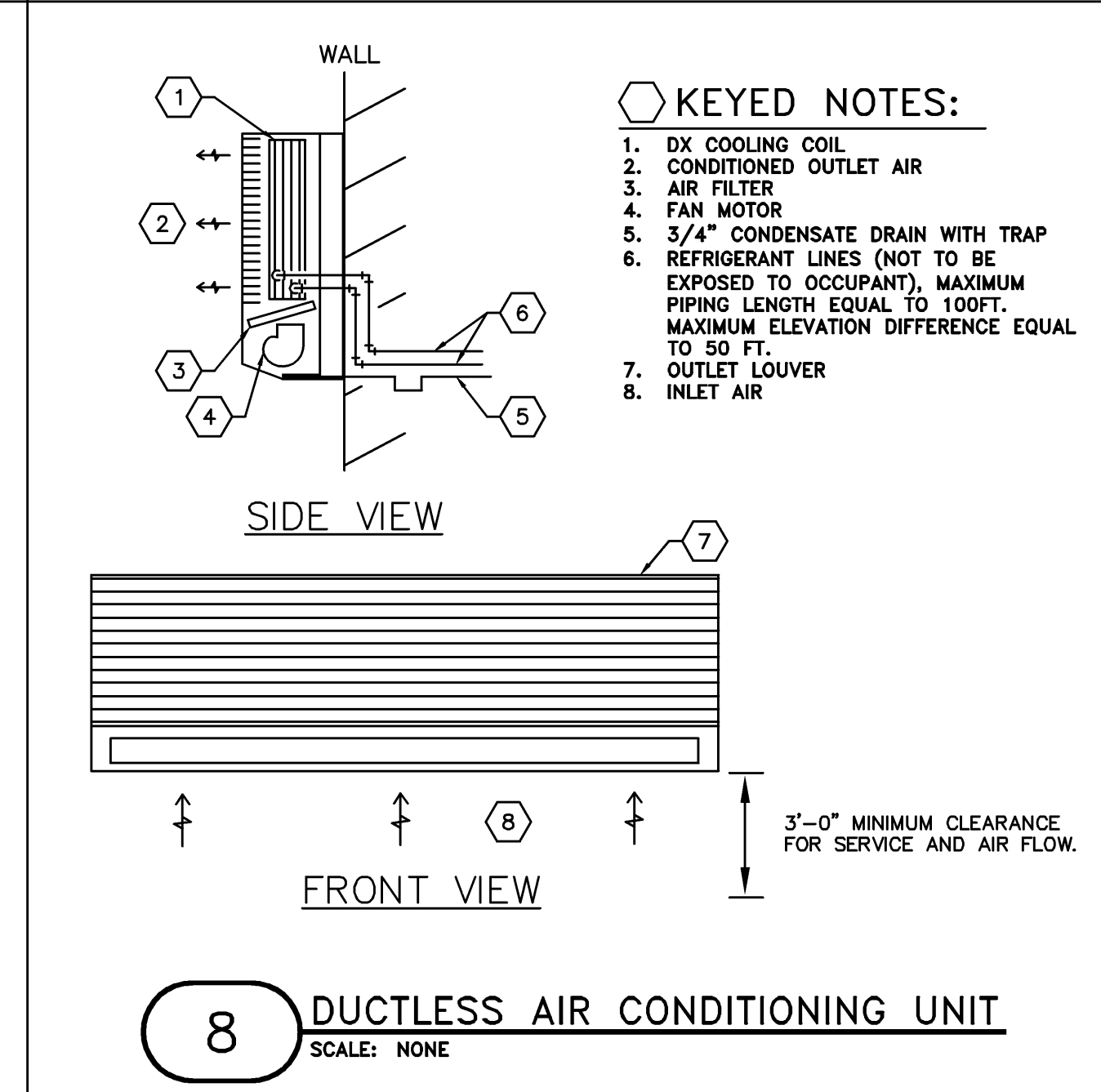
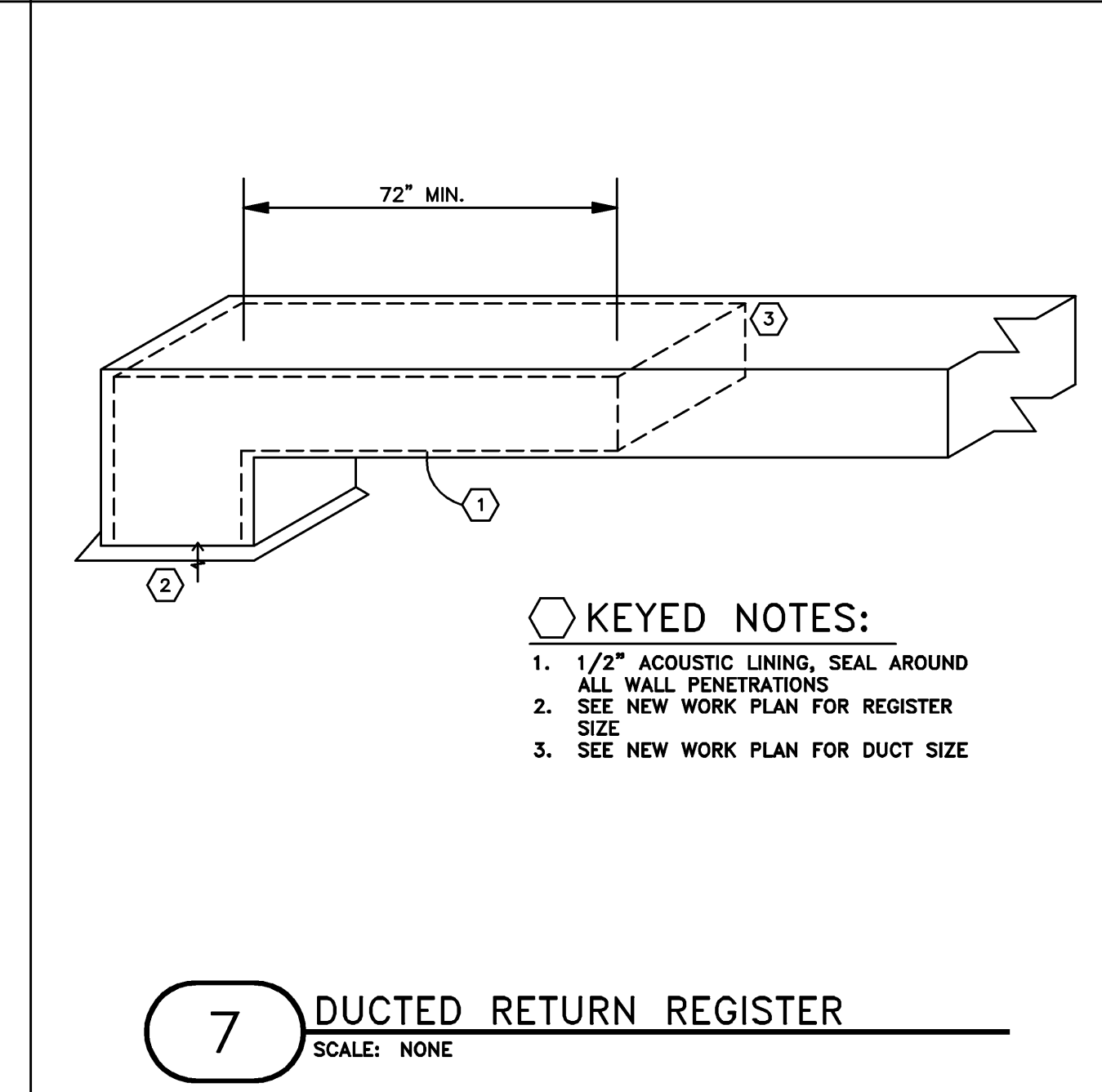
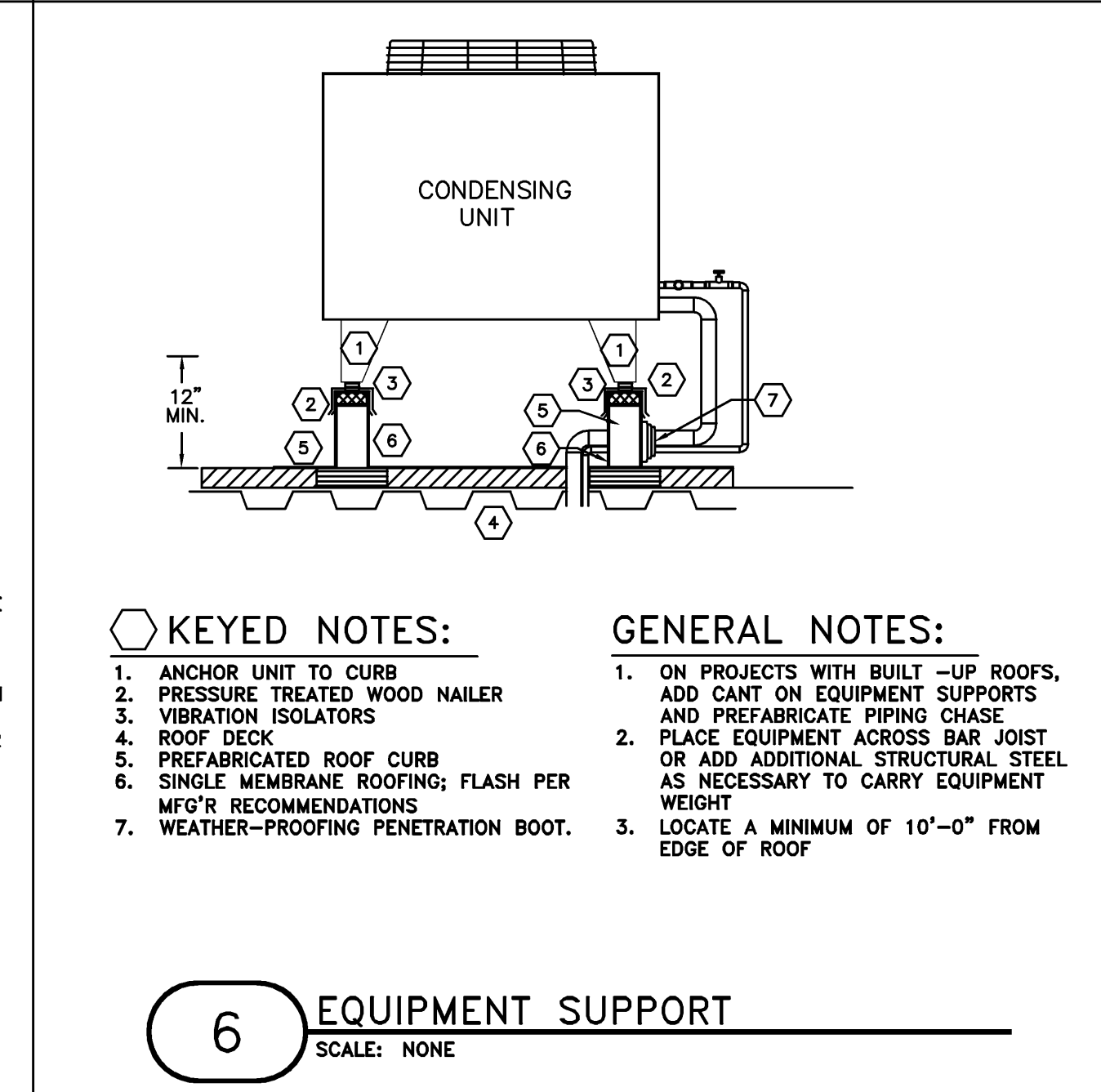
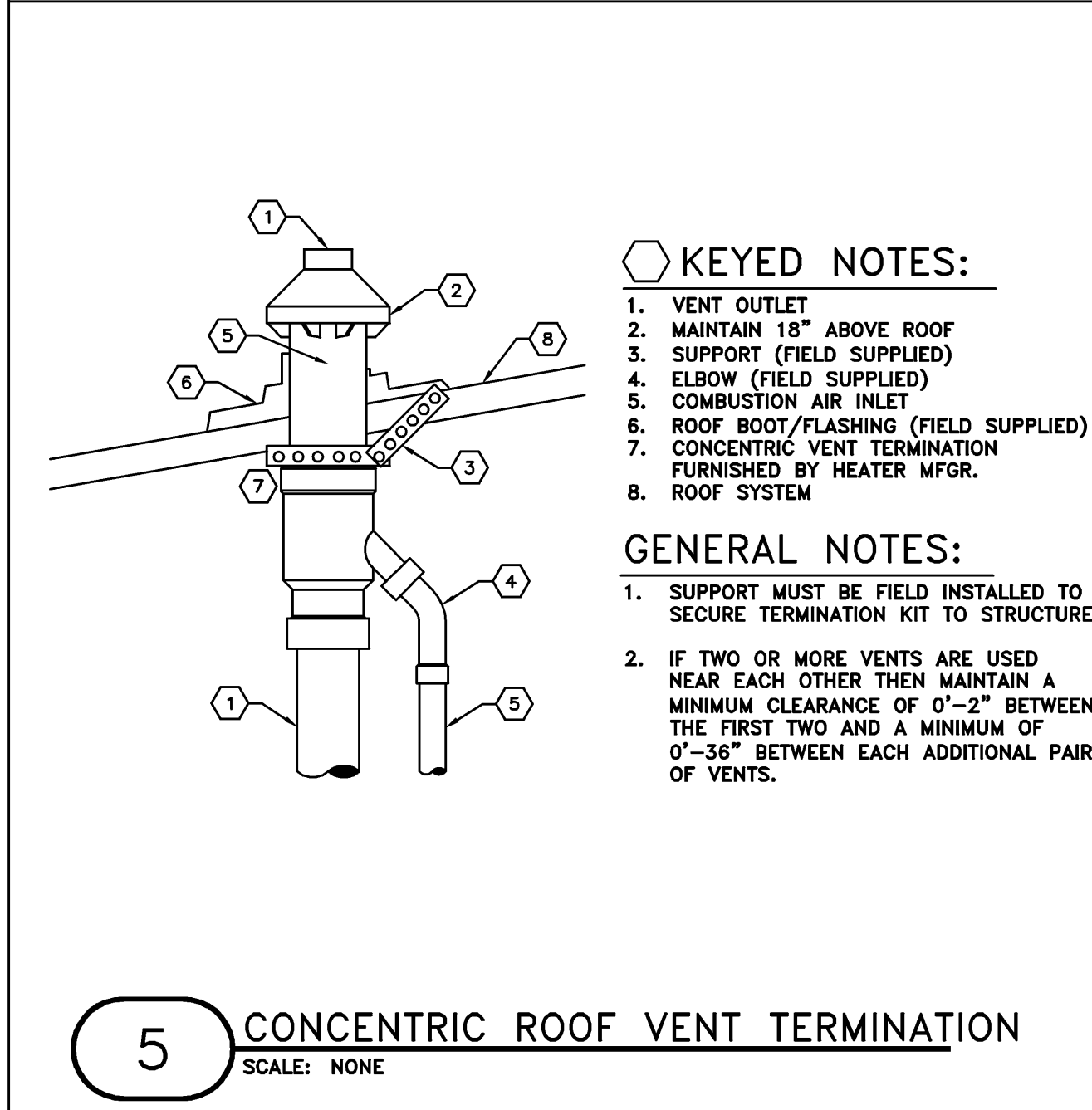
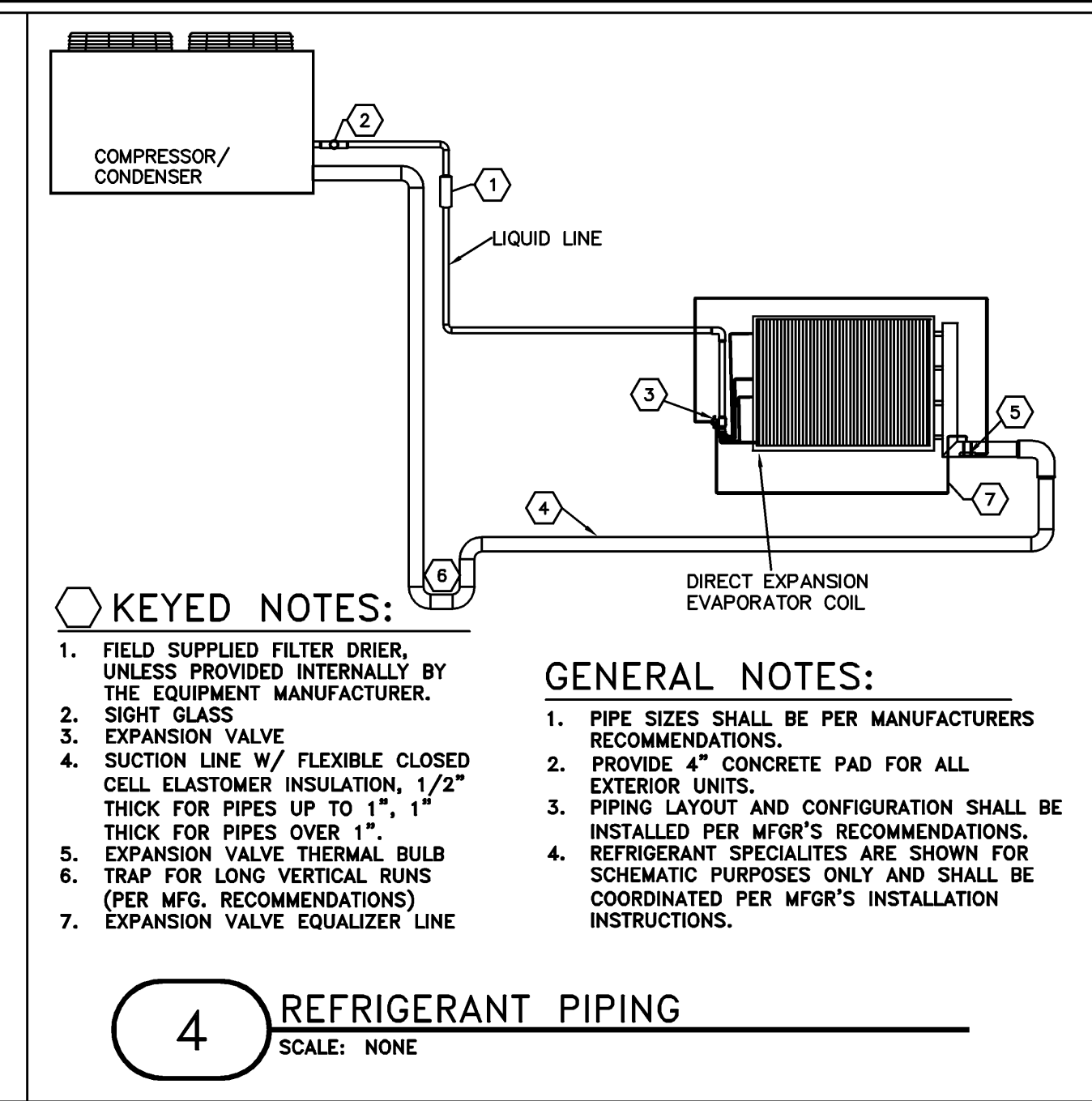
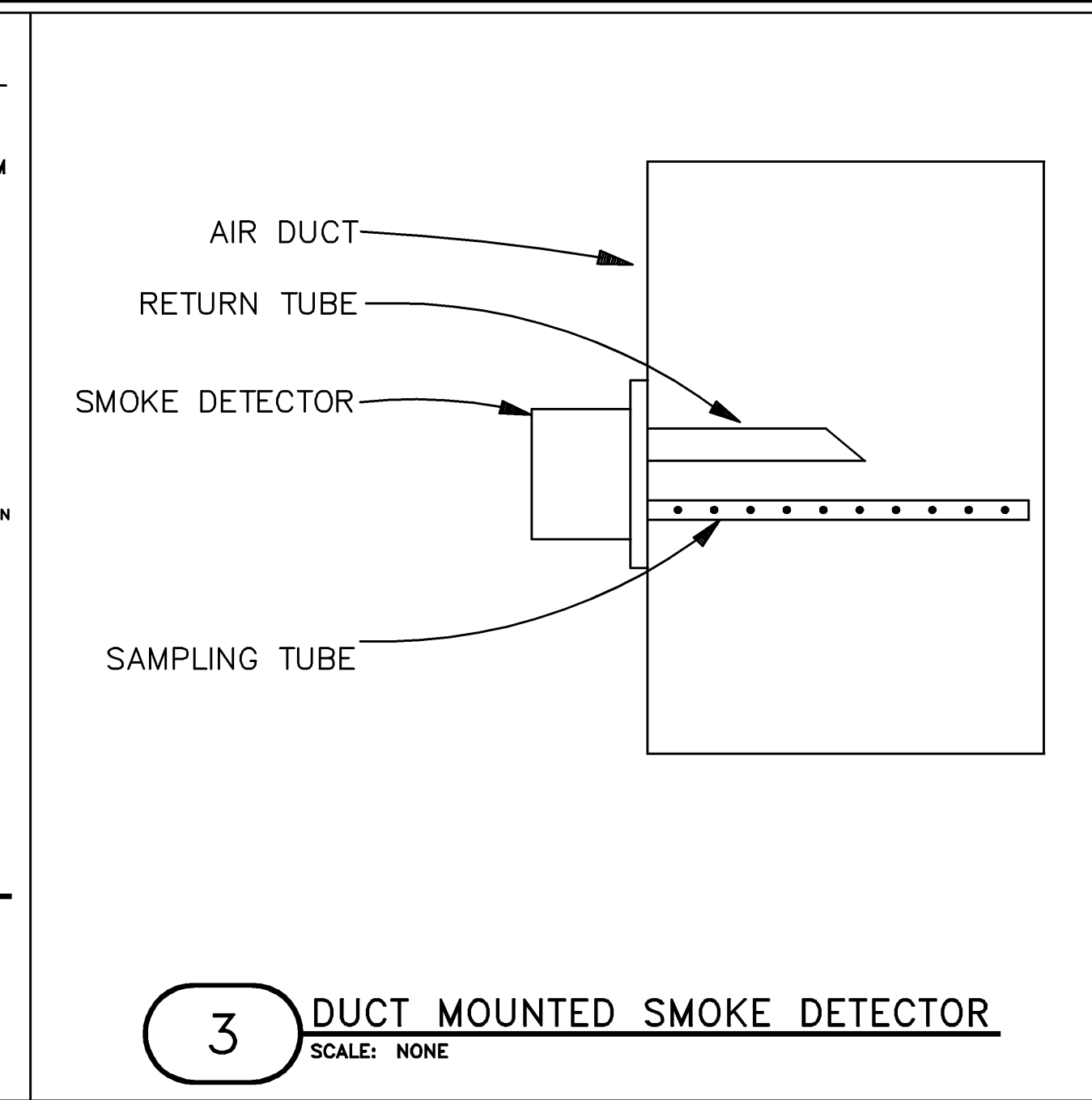
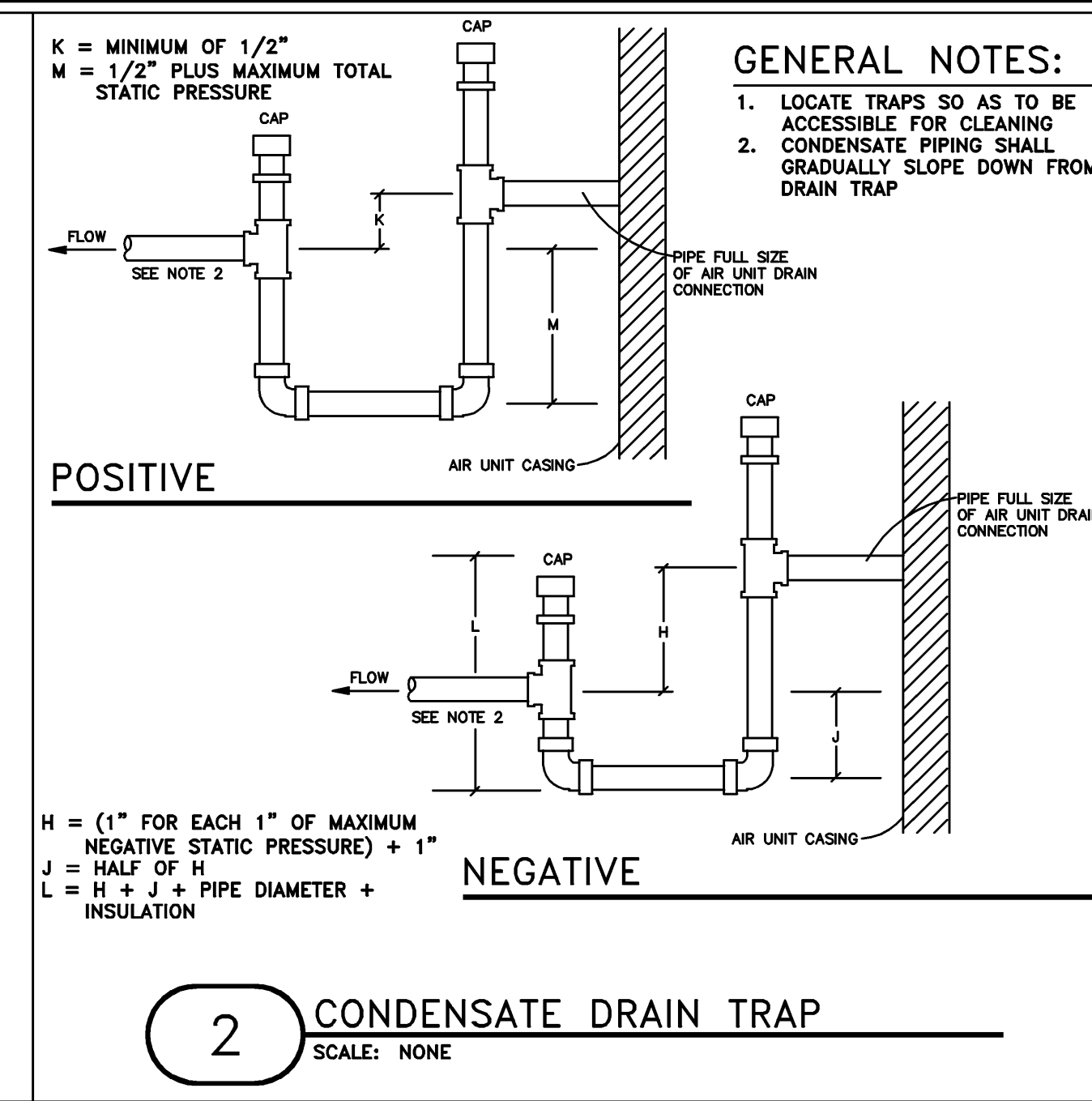
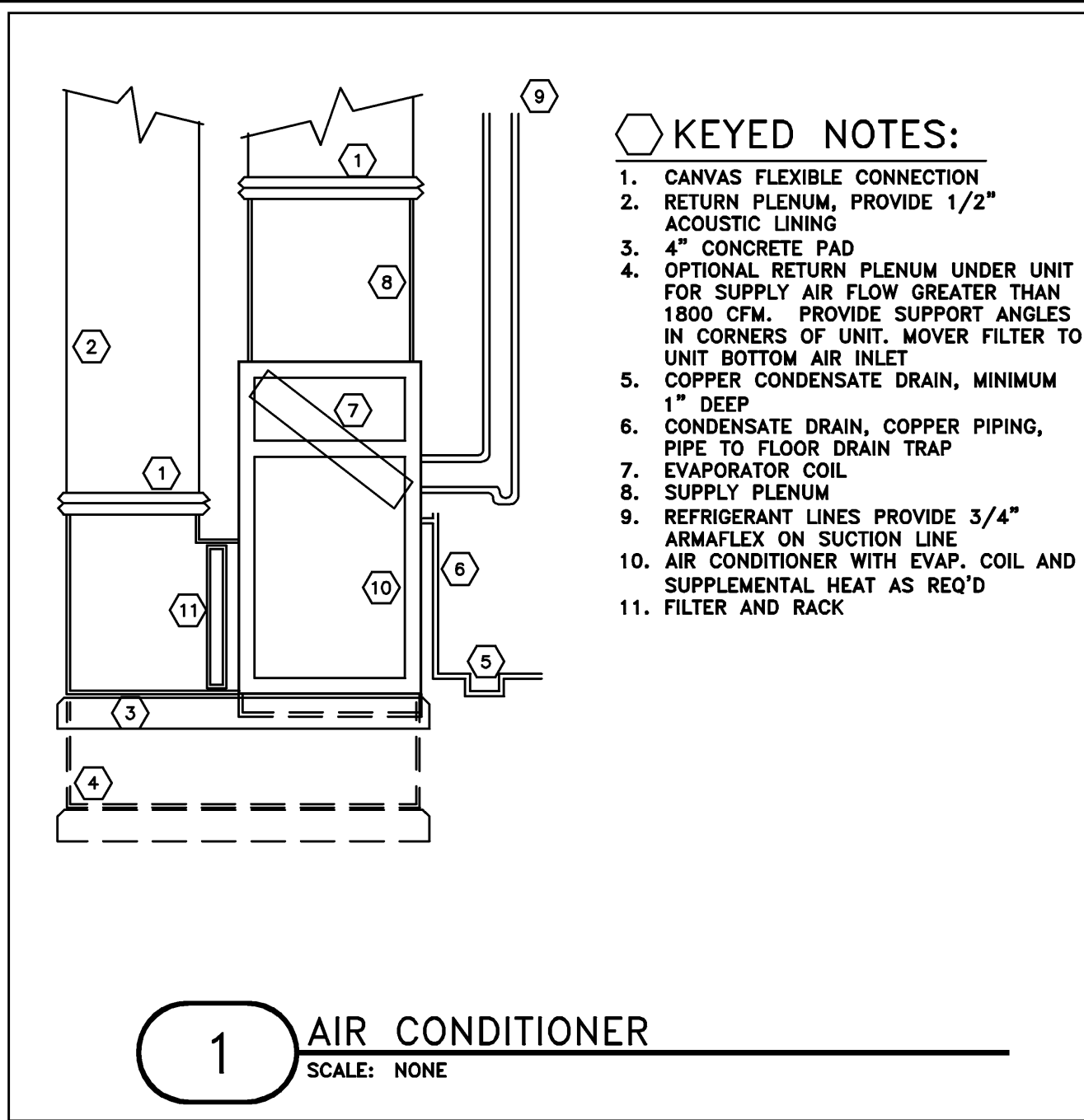


THIS DOCUMENT, AND THE IDEAS AND DESIGNS INCORPORATED THEREIN, IS THE PROPERTY OF K4 ARCHITECTURE, L.L.C. AND IS NOT TO BE USED, IN WHOLE OR IN PART, FOR ANY OTHER PROJECT WITHOUT THE WRITTEN AUTHORIZATION OF K4 ARCHITECTURE, L.L.C. COPYRIGHT 2009. K4 ARCHITECTURE, L.L.C. ALL RIGHTS RESERVED.

File Location: C:\0000\9999\9605-9699\9681.dwg Plot Date: Feb. 19, 2010 10:54am



**K4 ARCHITECTURE, L.L.C.**  
555 Geet Street  
Cincinnati, Ohio 45203  
Tel: (513) 455-5005  
Fax: (513) 455-5008  
Webpage: www.k4places.com  
Email: info@k4places.com

PROPOSED BANKING CENTER FOR:

**first** first financial bank  
Shelbyville Branch  
1850 MARKETPLACE Blvd.  
SHELBYVILLE, INDIANA 46176

REVISIONS / SUBMISSIONS		
NO.	DESCRIPTION	DATE
1	PERMIT AND BID	02/22/10

**KOHRS, LONNEMANN, HELL**  
ENGINEERS, P.S.C.  
MECHANICAL/ELECTRICAL ENGINEERS  
WWW.K4ENRGS.COM  
104 BROWN STREET  
SHELBYVILLE, IN 46176  
TEL: 502-226-4200  
FAX: 502-226-4202

H.V.A.C. DETAILS  
Drawn By: KTW  
Scale: AS NOTED  
Job No.: 09-2109

**HV201**