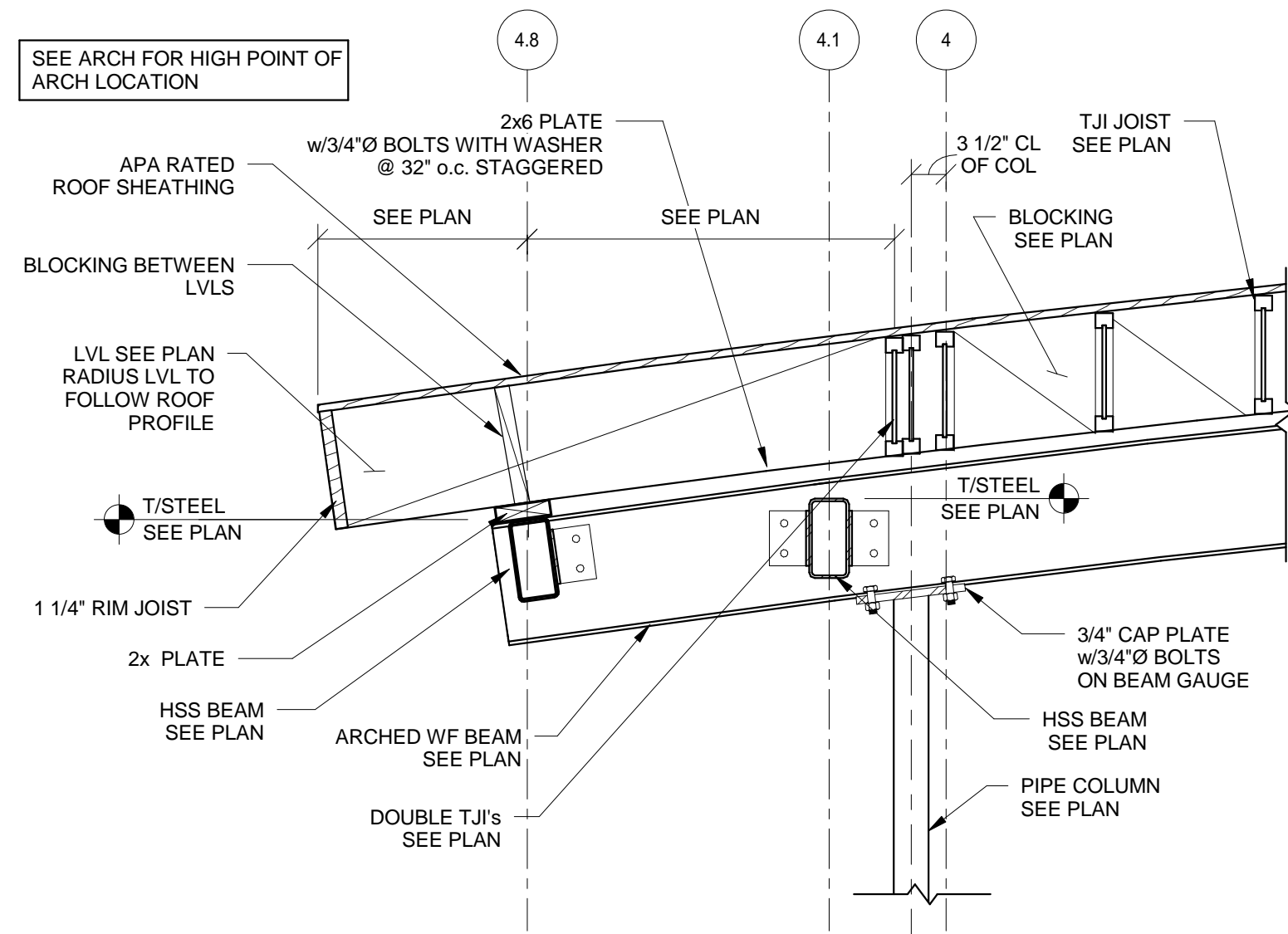
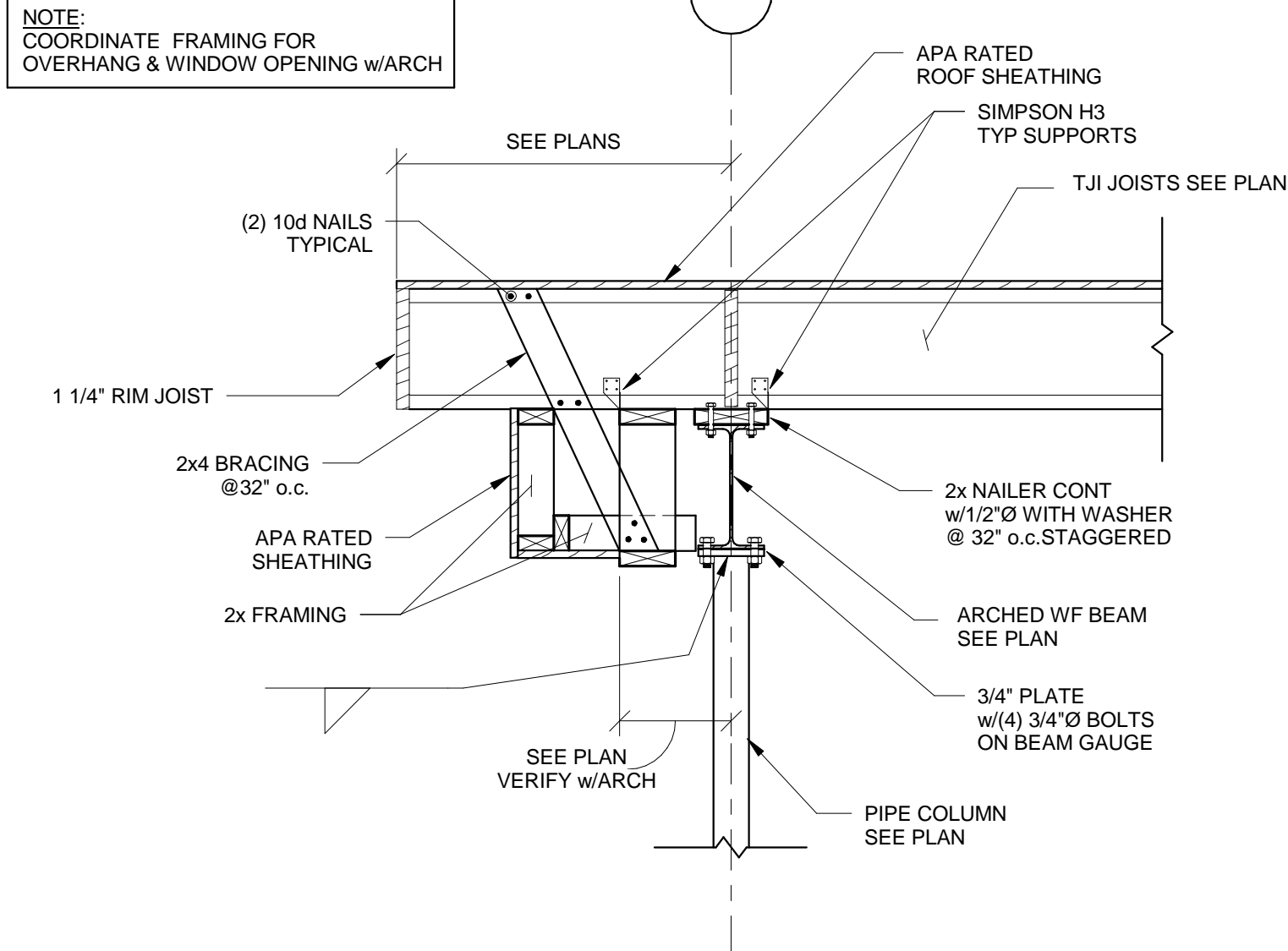


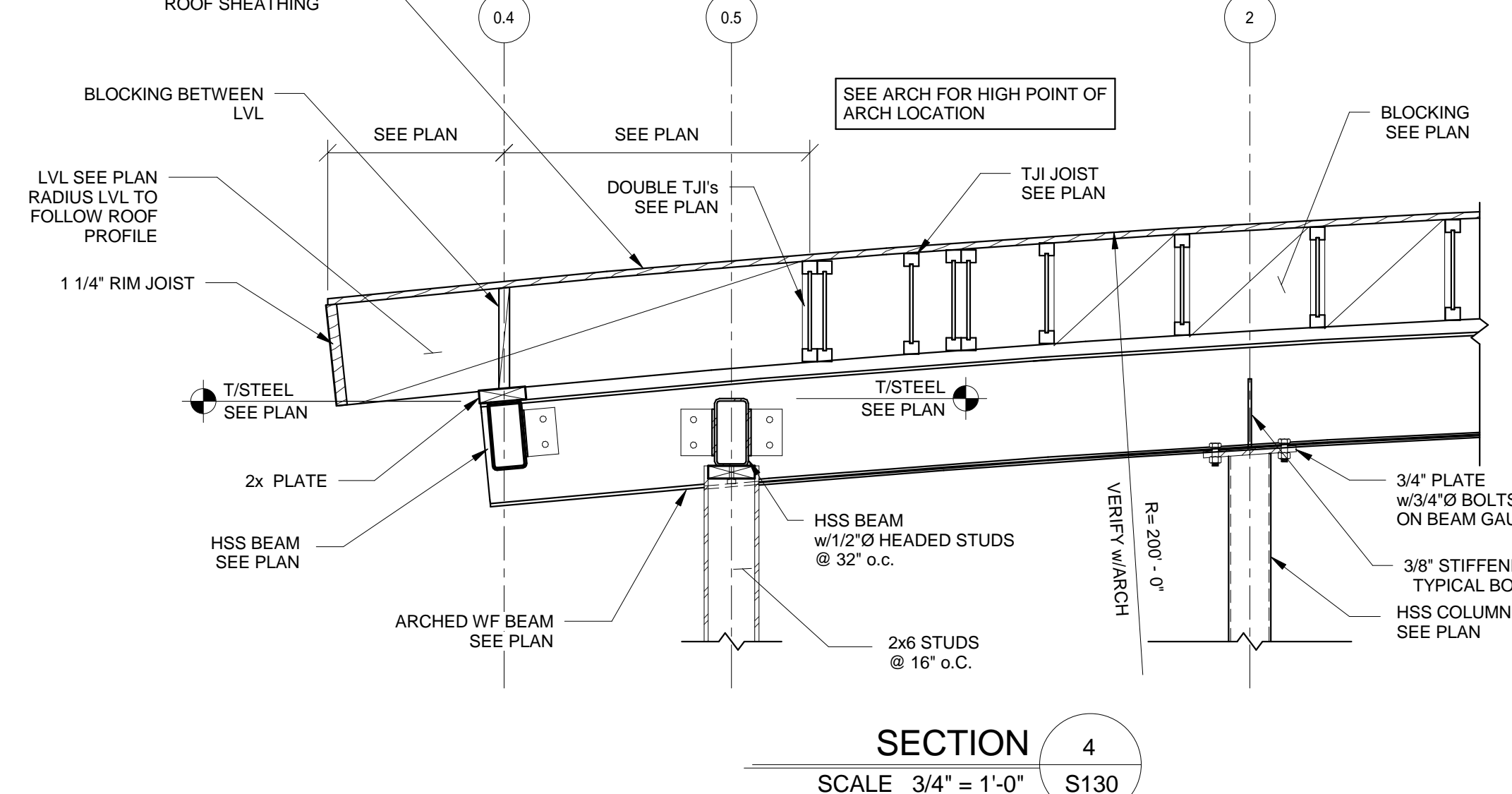
THE DOCUMENT AND THE DESIGN ORIGINATOR'S MARK ARE AN INSTRUMENT OF PROFESSIONAL SERVICE. IT IS THE PROPERTY OF ADVANTAGE GROUP ENGINEERS, INC. AND IS NOT TO BE REPRODUCED OR TRANSMITTED IN ANY FORM OR BY ANY MEANS, ELECTRONIC OR MECHANICAL, WITHOUT THE WRITTEN PERMISSION OF ADVANTAGE GROUP ENGINEERS, INC. ALL RIGHTS RESERVED.



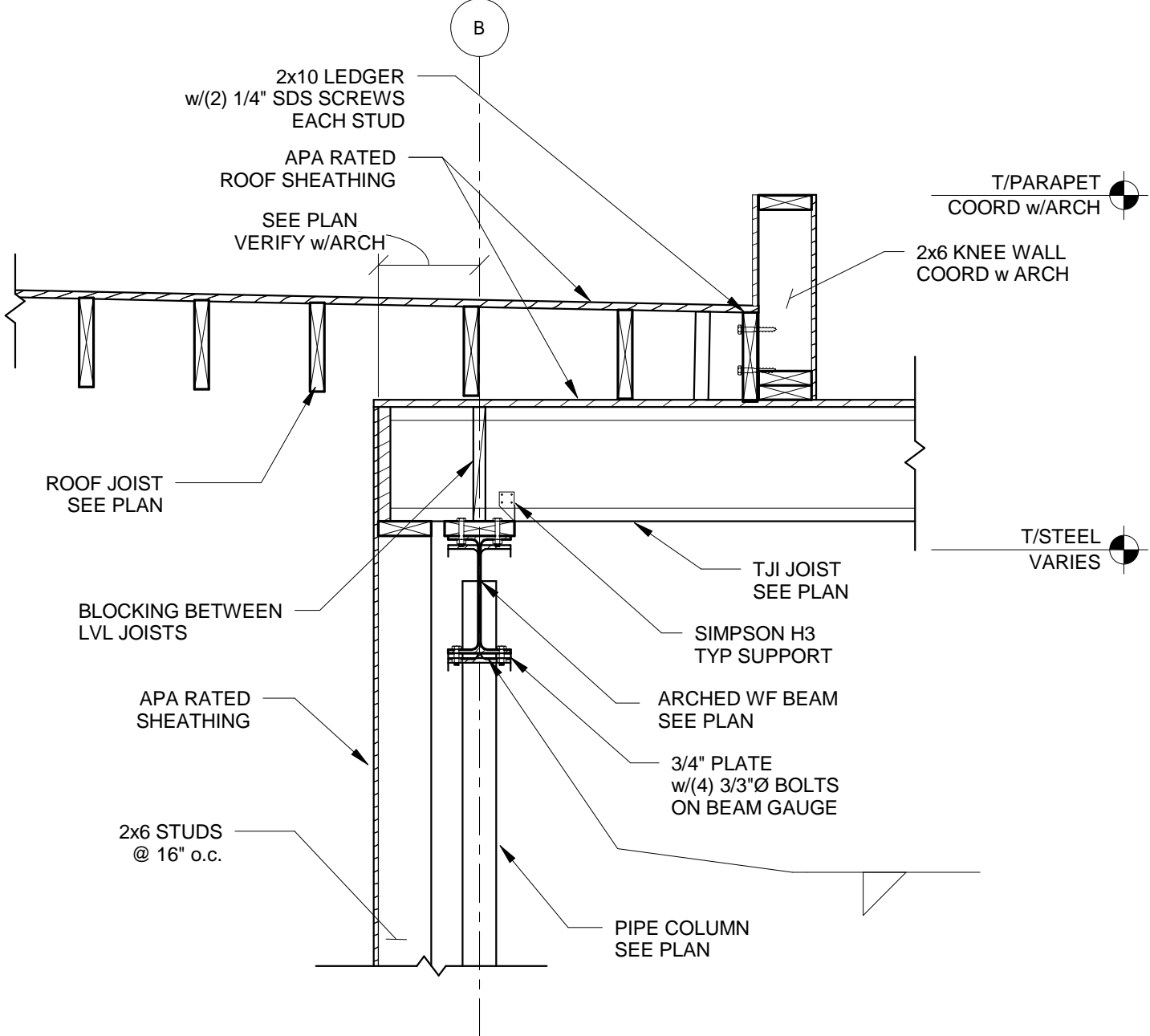
SECTION 2
SCALE 3/4" = 1'-0"
S130



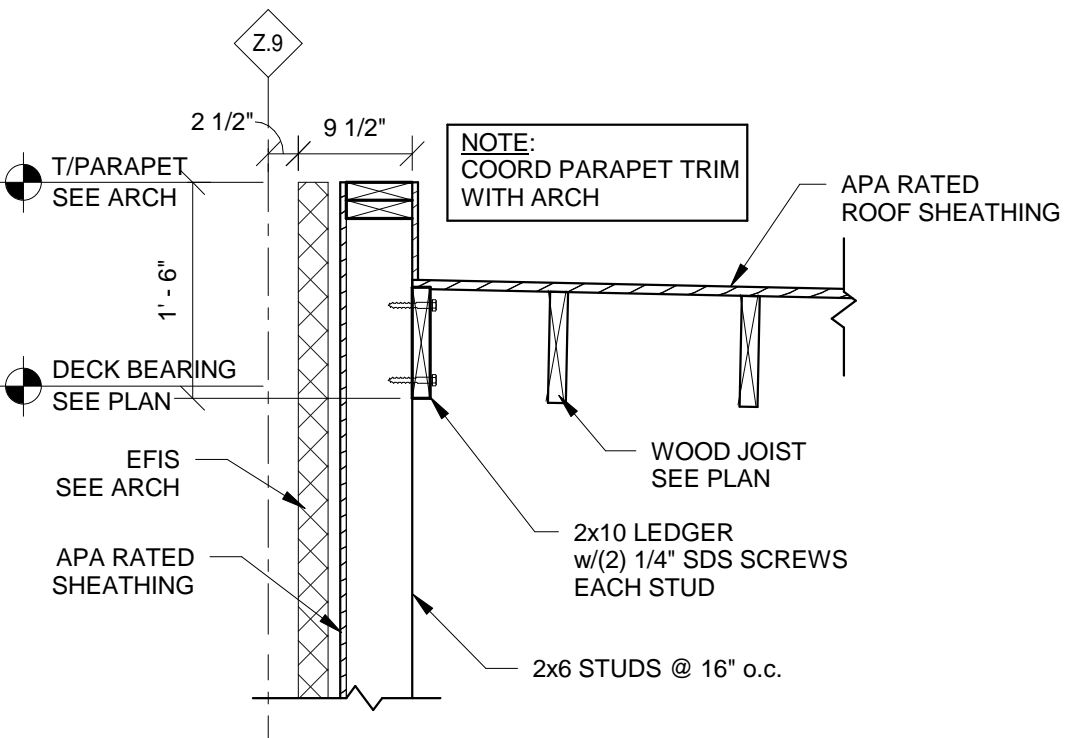
SECTION 3
SCALE 3/4" = 1'-0"
S130



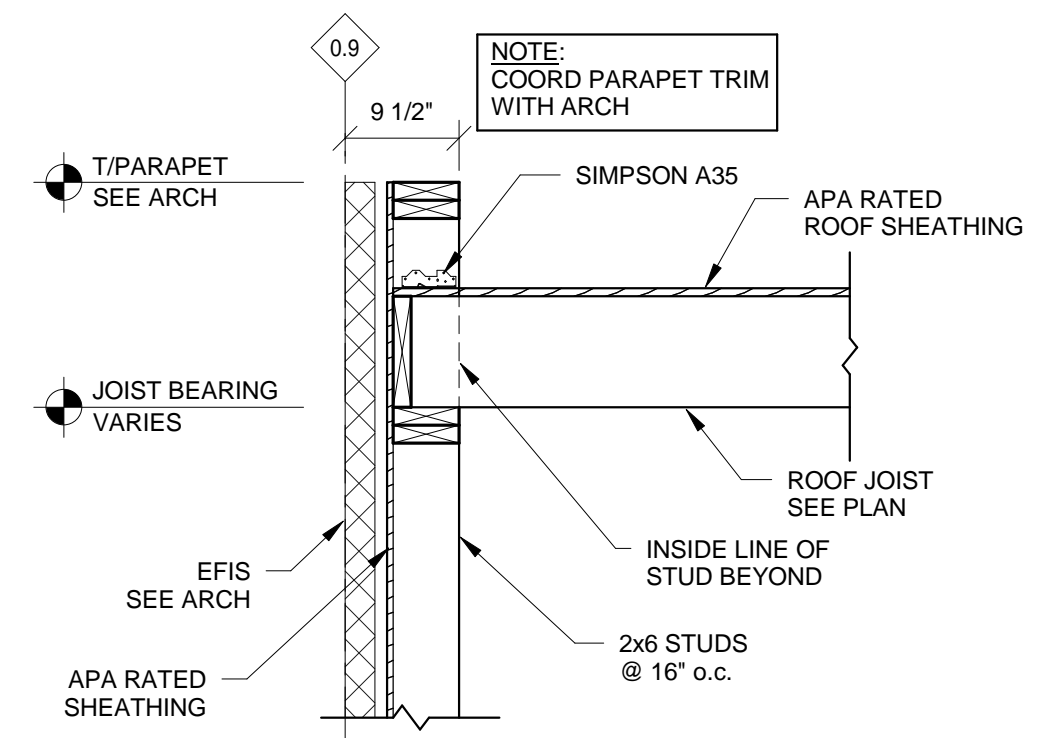
SECTION 4
SCALE 3/4" = 1'-0"
S130



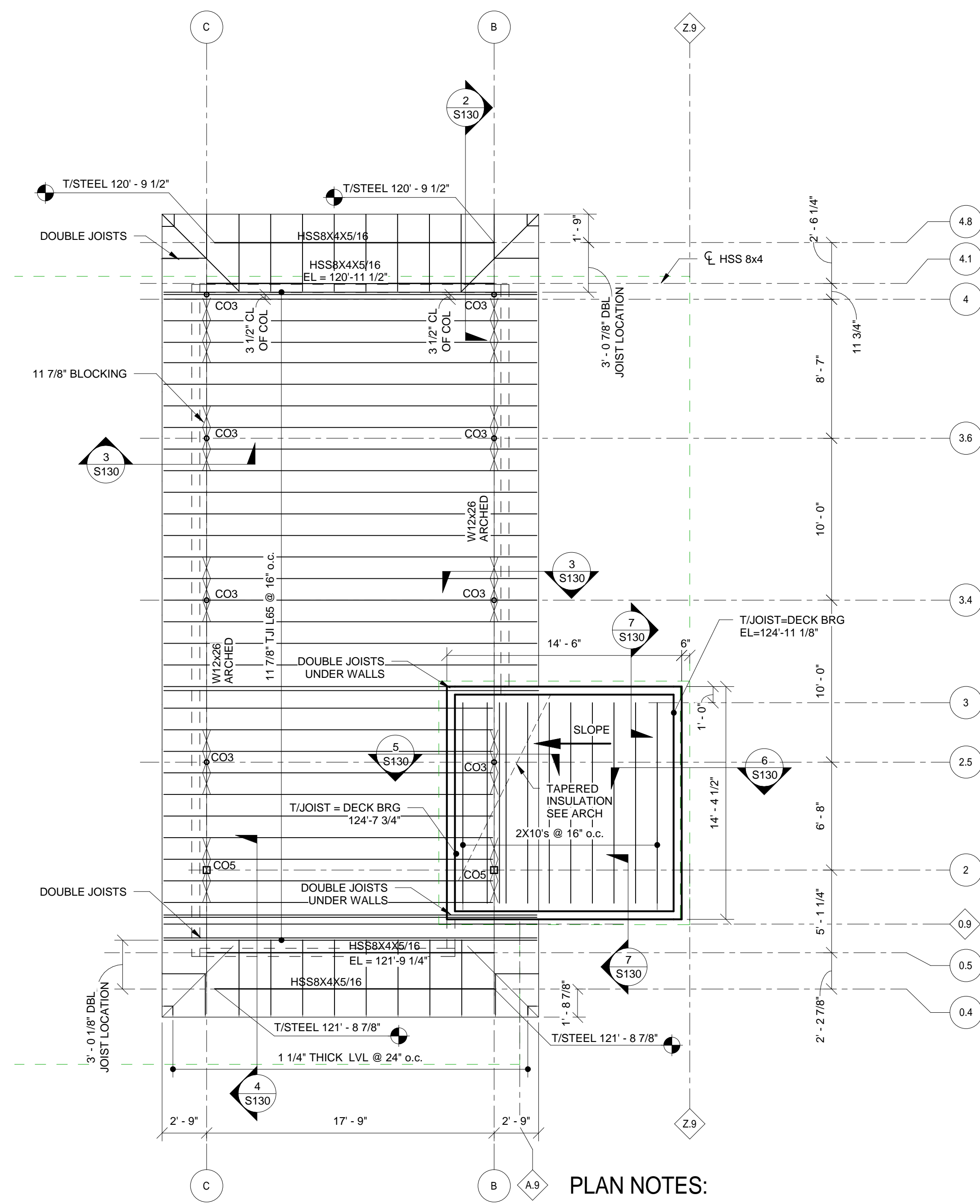
SECTION 5
SCALE 3/4" = 1'-0"
S130



SECTION 6
SCALE 3/4" = 1'-0"
S130



SECTION 7
SCALE 3/4" = 1'-0"
S130



UPPER ROOF FRAMING PLAN
SCALE 3/16" = 1'-0"

PLAN NOTES:
1. SEE ARCHITECTURAL DRAWINGS FOR APEX AND RADIUS OF W12x16



K4 ARCHITECTURE, LLC
555 Gest Street
Cincinnati, Ohio 45203
Tel: (513) 455-5005
Fax: (513) 455-5008
Webpage: www.k4places.com
Email: k4arch@k4places.com

PROPOSED BANKING CENTER FOR:
first financial bank
Shelbyville Branch
1850 MARKETPLACE Blvd.
SHELBYVILLE, INDIANA 46176

REVISIONS / SUBMISSIONS		
NO.	DESCRIPTION	DATE
1	PERMIT AND BID	02/22/10

Structural Consultants
ADVANTAGE GROUP ENGINEERS, INC.
660 Lincoln Avenue, Suite 305
Cincinnati, Ohio 45206
Ph: (513) 396-8900
FAX: (513) 396-8903

UPPER ROOF FRAMING PLAN
Drawn By: Author
Scale: AS SHOWN
Job No.: 09131.17

S130