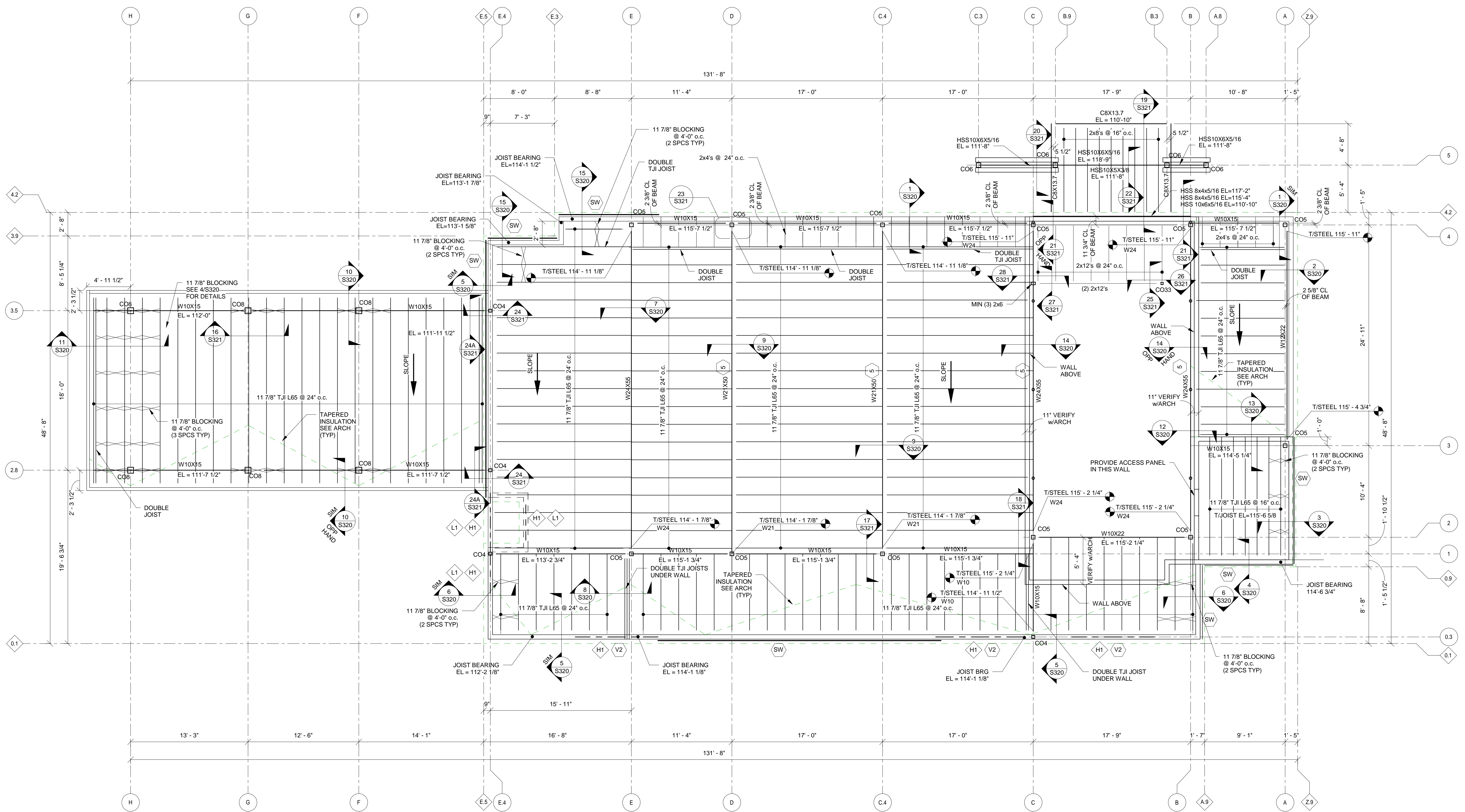


THIS DOCUMENT AND THE DESIGN INFORMATION HEREIN IS AN INSTRUMENT OF PROFESSIONAL SERVICE AND IS THE PROPERTY OF ADVANTAGE GROUP ENGINEERS, INC. NO PART OF THIS DOCUMENT IS TO BE REPRODUCED OR TRANSMITTED IN ANY FORM OR BY ANY MEANS, WITHOUT THE WRITTEN AUTHORIZATION OF ADVANTAGE GROUP ENGINEERS, INC. ALL RIGHTS RESERVED.



COLUMN SCHEDULE		
COL#	DESCRIPTION	COMMENTS
CO30	3"Ø XX- STRONG PIPE COLUMN	
CO33	HSS 3x3x1/4	
CO40	HSS 4x4x1/4	
CO50	HSS 5x5x1/4	
CO60	HSS 6x6x5/16	
CO80	HSS 8x8x3/16	

LINTEL AND HEADER SCHEDULE		
H1	(3) 2x8	
V1	L4x3 1/2x3/8	MIN 8" BEARING
V2	L6x4x3/8	MIN 8" BEARING

MAIN ROOF FRAMING PLAN
SCALE 3/16" = 1'-0"



- PLAN NOTES:**
- SEE SHEET S001 FOR STRUCTURAL GENERAL NOTES.
 - ALL WALL STUDS TO BE SPP NO. 2 UNLESS NOTED OTHERWISE.
 - SW DENOTES SHEAR WALL LOCATIONS. PROVIDE 2x6 BLOCKING ALONG ALL SEATHING EDGES BETWEEN 2x6 STUDS.
SHEAR WALL NAILING PATTERN: 8d NAILS AT 6" o.c. AT PANEL EDGES
8d NAILS AT 12" o.c. IN FIELD
SEE FOUNDATION PLAN FOR SIMPSON HOLDDOWNS
 - VERIFY FINAL SIZE AND LOCATION OF ALL BUILDING OPENINGS WITH ARCHITECTURAL DRAWINGS.
 - BEAM TO HAVE 3/8" STIFFENER PLATES AT CENTER WITH HOLE FOR 1/2"Ø BOLT FOR BOTTOM FLANGE BRACING. PROVIDE 2x6 KICKER TO ADJACENT JOIST.



K4 ARCHITECTURE, LLC
555 Gest Street
Cincinnati, Ohio 45203
Tel: (513) 455-5005
Fax: (513) 455-5008
Webpage: www.k4places.com
Email: k4arch@k4places.com

PROPOSED BANKING CENTER FOR:

first
first financial bank

Shelbyville Branch
1850 MARKETPLACE Blvd.
SHELBYVILLE, INDIANA 46176

REVISIONS / SUBMISSIONS		
NO.	DESCRIPTION	DATE
1	PERMIT AND BID	02/22/10

Structural Consultants
ADVANTAGE GROUP
ENGINEERS, INC.

660 Lincoln Avenue, Suite 305
Cincinnati, Ohio 45206
Ph: (513) 396-8900
FAX: (513) 396-8903

MAIN ROOF FRAMING PLAN

Drawn By: BR/GB
Scale: AS SHOWN
Job No.: 09131.17

S120